



Regus Lugano Quartiere Maghetti.

© Regus Group Services 2015

The Regus logo consists of the word "Regus" in a bold, black, sans-serif font. Above the letter "u", there is a small red dot and a black arrow pointing downwards.

Our Centre Info.



Lugano Quartiere Maghetti

Taking its name from this modern and colourful side of Lugano, the building is located in the very central square of Quartiere Maghetti, close to shops, restaurants, bus stops, and public parking. Everything is within easy reach, from the inspirational green space of Parco Ciani to the Milano Malpensa Airport, which is reachable also by train; FFS railway station is just a 5 minutes away by the close funicular.

Meeting rooms Lugano Maghetti.

	DELEGATES	DAYLIGHT	VIDEOCONFERENCE	HOURLY PRICE	HALF DAY PRICE	FULL DAY PRICE
MONTE BRE'	4	NO	NO	CHF 58.00	CHF 174.00	CHF 232.00
SAN SALVATORE	8	NO	NO	CHF 93.00	CHF 279.00	CHF 372.00

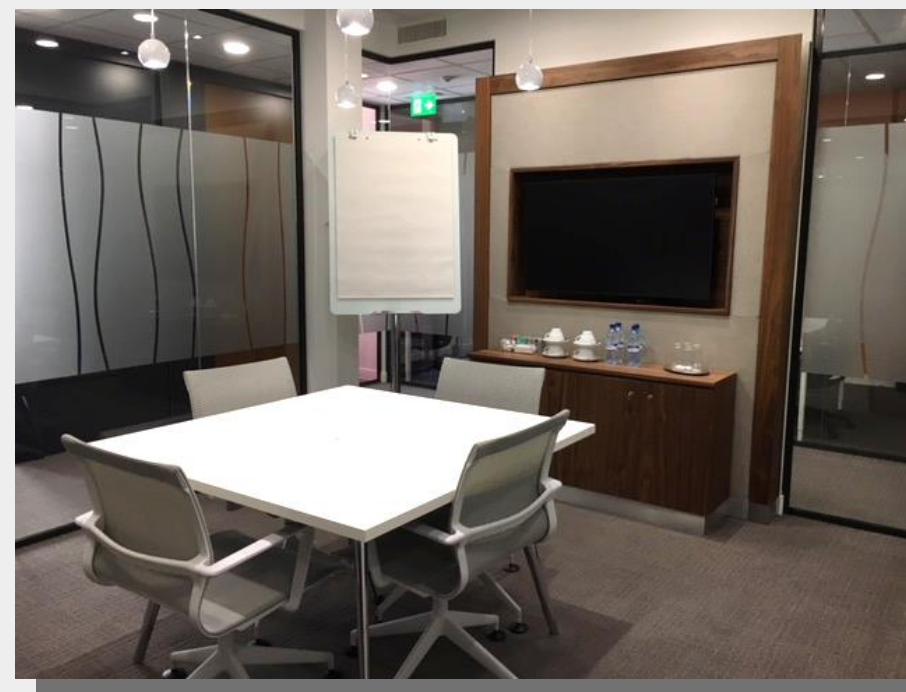
Prices to be intended VAT excluded

- Sparkling and natural water.
- Wi-fi connection.
- Flipcharts and white boards.
- Reception services and welcoming your visitors.
- Coffee area access.

Rooms are subject to availability

From Monday to Friday from 8.30 to 17.00.
 Half day price is referred to the following hours: 9.00-12.00 and 14.00 -17.00.

For reservations between these hours we will apply hourly price.



Meeting Room Brè

Services ●



ADDITIONAL SERVICES			
AFTER HOUR SURCHARGE		CHF 70.00+VAT/ hour	
FACILITIES	VIDEOPROJECTOR	1 hour	CHF 10.00+VAT
CATERING COFFEE BREAK UNLIMITED REFRESHME NT BUSINESS LUNCH	WELCOME COFFEE	CHF 6.00 +VAT/ person	
		CHF 15.00 +VAT/ person	
		CHF 10.00+VAT / person	
		CHF 20.00 +VAT/ person	

Offices.

A private working space to be booked for one hour, half day, full day.

Wi-fi connection.

Reception services and welcome of your visitors.

Coffee area access.

Multifunction printer access.

PRICE	MAGHETTI
1 HOUR	CHF 37.25
HALF DAY	CHF 111.75
FULL DAY	CHF 149.00

Prices to be intended VAT excluded



Offices are subject to availability

From Monday to Friday from 8.30 to 17.00.

Half day price is referred to the following hours: 9.00-12.00 and 14.00 -17.00.

For reservations between these hours we will apply hourly price.

Co-Working.



- Your workspace in a shared office.
- Wi- fi connection.
- Reception services.
- Coffee area access.

PRICE	MAGHETTI
1 HOUR	CHF 19.75
HALF DAY	CHF 59.25
FULL DAY	CHF 79.00

Prices to be intended VAT excluded

From Monday to Friday from 8.30 to 17.00.
 Half day price is referred to the following hours: 9.00-12.00
 and 14.00 -17.00.

For reservations between these hours we will apply hourly price.

Business Lounge.

Wi- fi connection.

Reception services and welcome of your visitors.

Multifunction printer access.

ACCESS	PRICE/MONTH
GLOBAL	CHF 139.00



Day Pass, if not a Businessworld member CHF 25.00

From Monday to Friday from 8.30 to 17.00.

Our team is available to give you all the information about our services, or to show you our spaces, including day offices and meeting rooms, or to know all your needs in order to arrange the perfect event for you.

We look forward to welcoming you!

CANCELLATION TERMS				
	0-2 working days	3-5 working days	6-10 working days	≥ 11 working days
0-10 people	100 %	50%	0%	0%
≥ 10 people	100 %	100 %	50%	0%

Regus Lugano Quartiere Maghetti
Via Canova 15
6900 Lugano

Tel 0041 (0)91 260 8800
E-mail: lugano.maghetti@regus.com